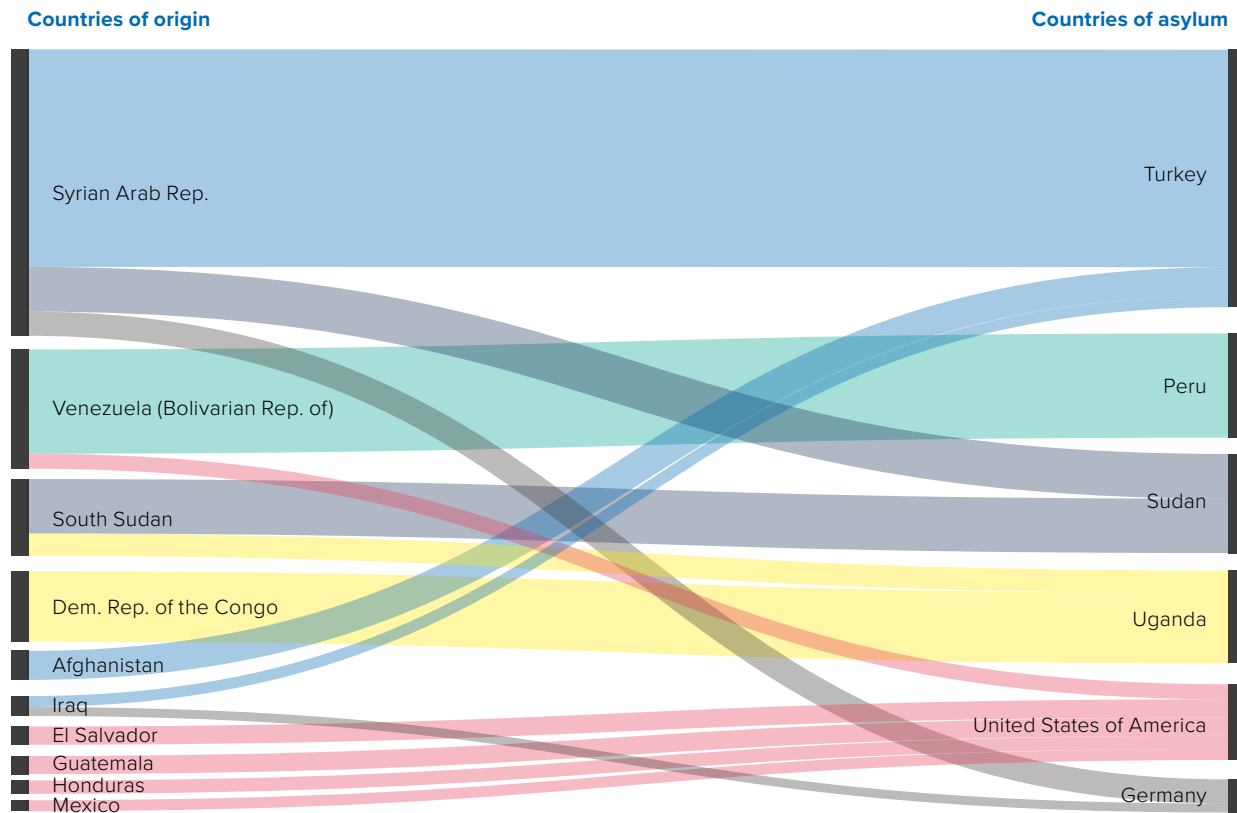


Figure 4 | Key flows of newly registered refugees and new asylum-seekers in 2018



lack of consistent terminology and difficulties in comparing statistics internationally.

The Commission:

- endorsed the International Recommendations on Refugee Statistics;
- endorsed the Technical Report on Statistics of IDPs and supported the proposal to upgrade this work to develop formal recommendations; and
- reaffirmed the mandate to develop a compiler’s manual on refugee and IDP statistics to provide hands-on guidance for the recommendations.

In addition to the 40 countries that took part in the EGRIS and those that had also contributed through the global consultations in 2017, several country representatives took the floor at the Statistical Commission to welcome this work. Certain elements of the work received particular support such as focusing on the importance of coordination and the central role of national statistical offices, as well as including the potential of different data sources and methodologies within the recommendations.¹³ ■

NOTE:

This Global Trends report analyses statistical trends and changes in global displacement from January to December 2018 in populations for whom UNHCR has been entrusted with a responsibility by the international community, including refugees, asylum-seekers, returnees, stateless people and conflict-affected internally displaced people.¹⁴ The data presented are based on information received as of 18 May 2019 unless otherwise indicated.

The figures in this report are based on data reported by governments, non-governmental organizations, and UNHCR. The numbers are rounded to the closest hundred or thousand. As some adjustments may appear later in the year in the Population Statistics online database,¹⁵ the figures contained in this report should be considered as provisional and subject to change. Unless otherwise specified, the report does not refer to events occurring after 31 December 2018. ■

¹³ For more information: www.unhcr.org/blogs/experts-finally-agree-on-standards-for-refugee-statistics/

¹⁴ See p. 63 for a definition of each population group.

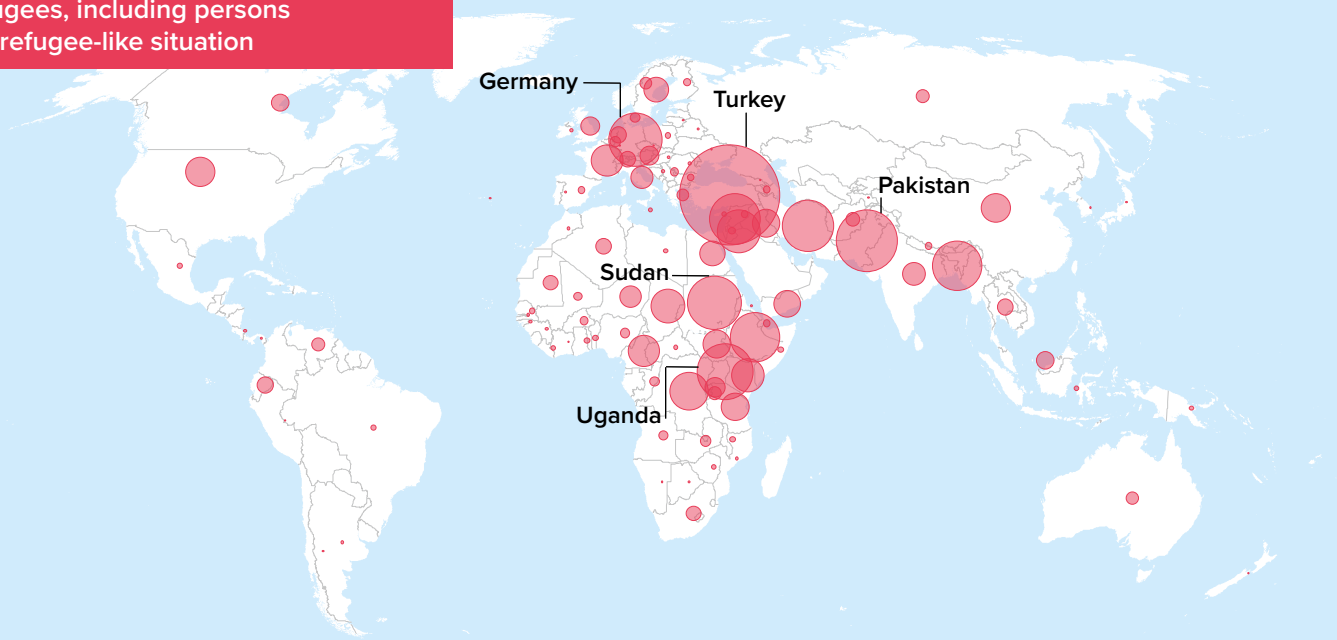
¹⁵ <http://popstats.unhcr.org>

ETHIOPIA. Inter-communal violence in southern and western Ethiopia displaced up to a million people inside their country. These internally displaced Ethiopians are among an estimated 11,000 people in Gedeo who have been left destitute and forced to sleep on the ground. UNHCR is providing emergency aid and has sent in emergency response teams to support the local authorities in establishing sites for the displaced.

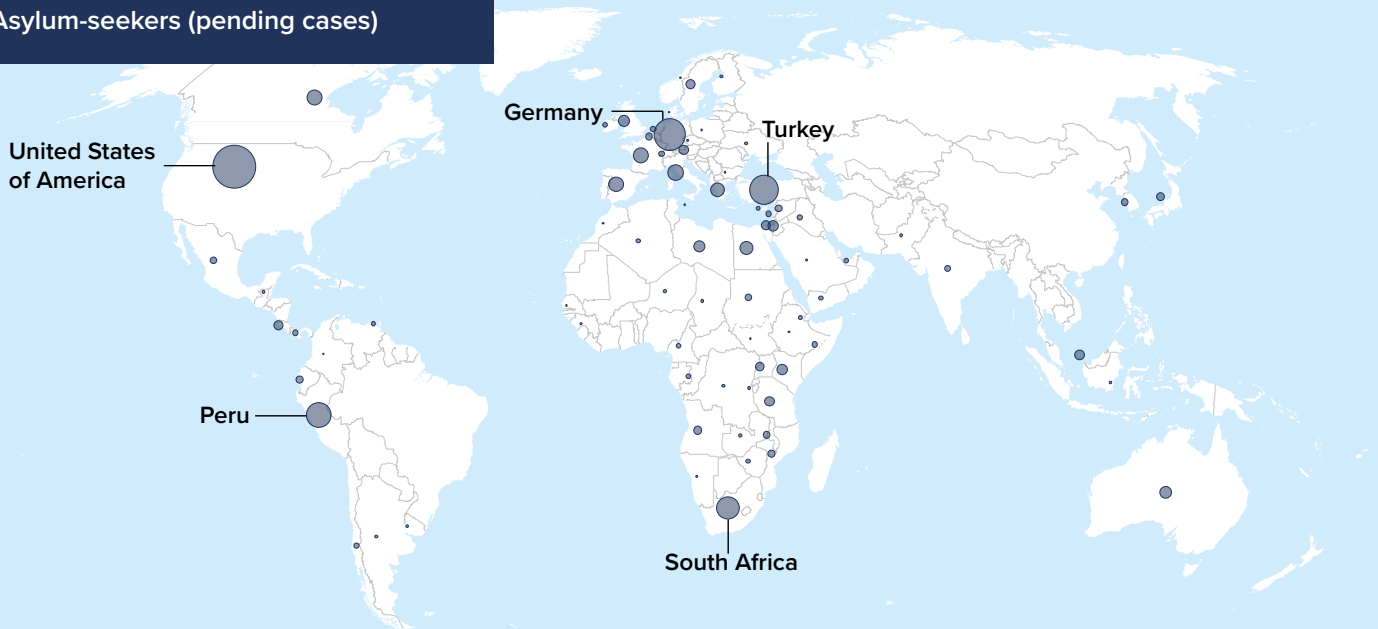
© UNHCR/ANNA HELLGE



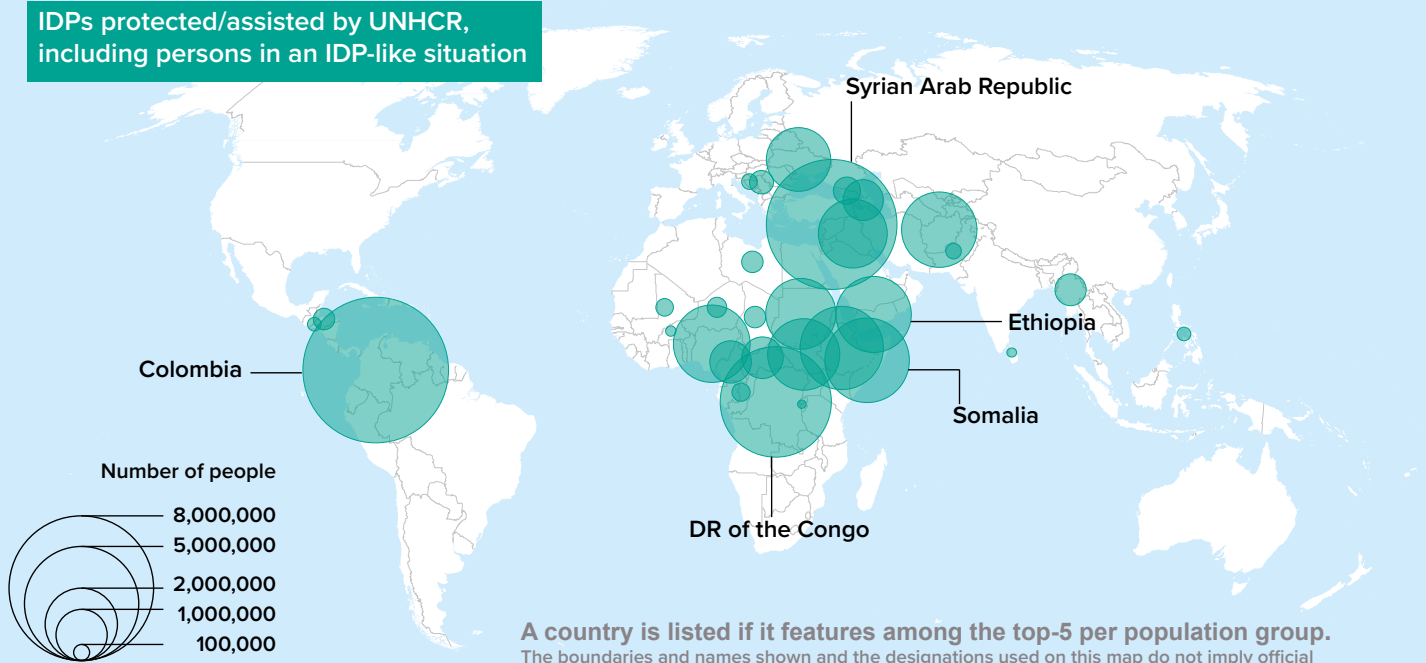
Refugees, including persons in a refugee-like situation



Asylum-seekers (pending cases)

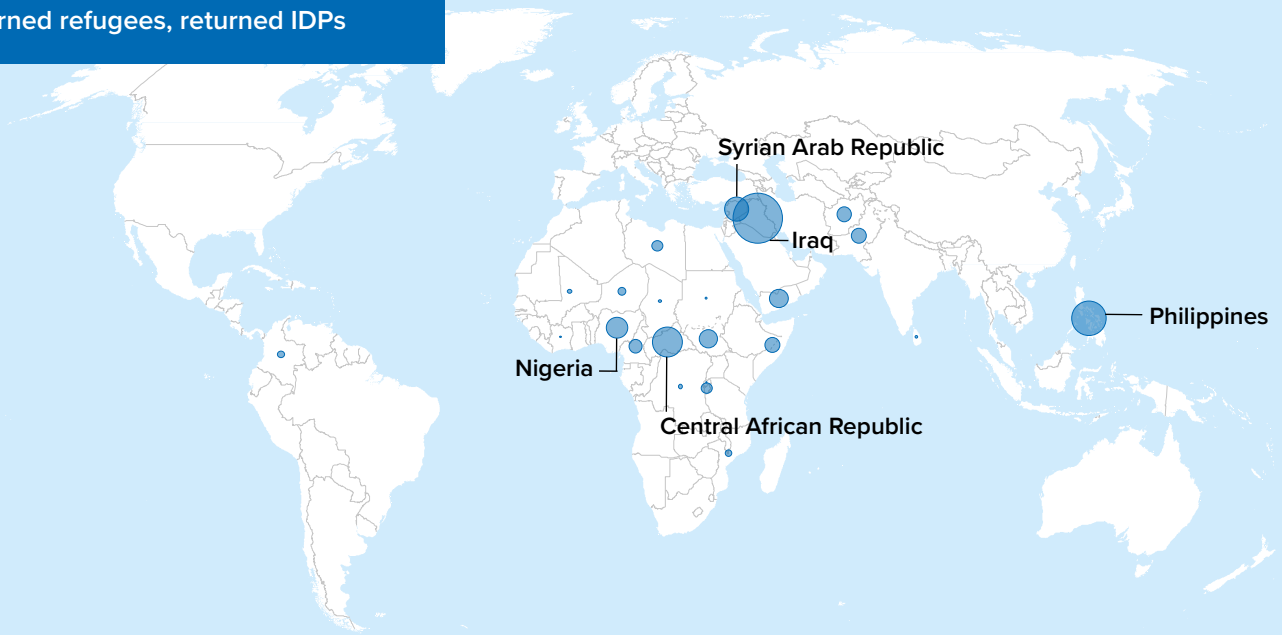


IDPs protected/assisted by UNHCR, including persons in an IDP-like situation

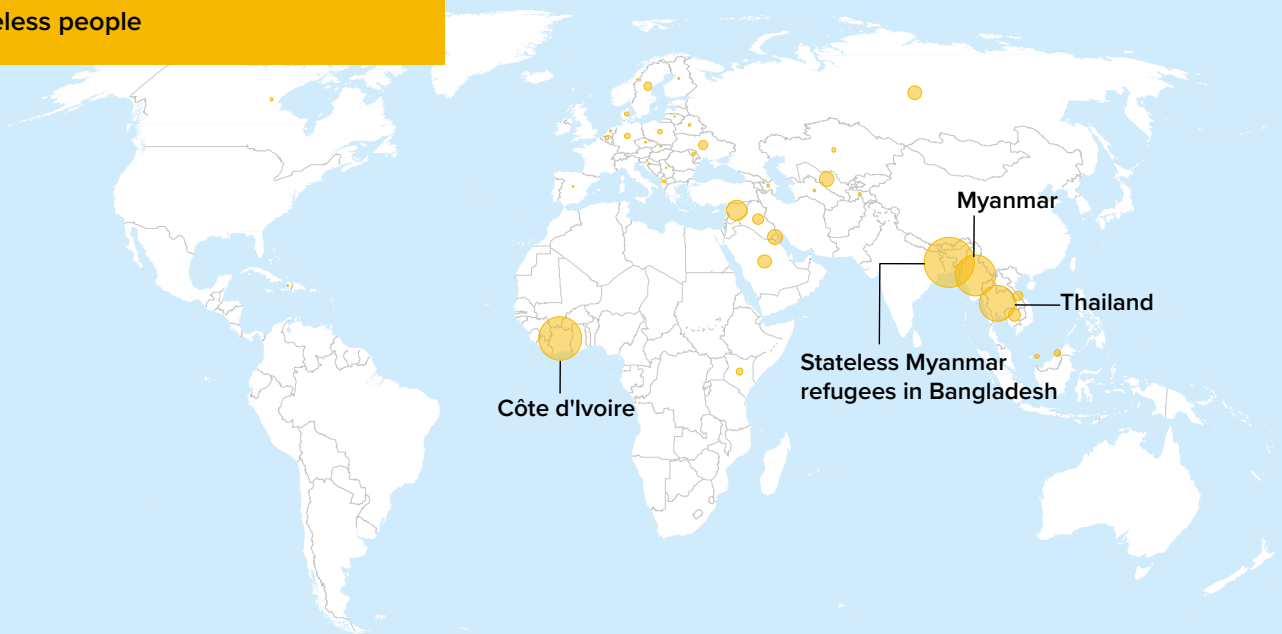


A country is listed if it features among the top-5 per population group. The boundaries and names shown and the designations used on this map do not imply official endorsement or acceptance by the United Nations.

Returned refugees, returned IDPs



Stateless people



Others of concern to UNHCR

